

Hi-Slim™

Specification

OLDHAM LIGHTING LTD

Hi-Slim™ is eminently suitable for all forms of architectural features, particularly when a continuous appearance, high lumen output and long life is required. Hi-Slim™ is a high constant output fluorescent hybrid lamp with a life in excess of 30,000 burning hours. Hi-Slim™ is suited to indoor applications where flexibility and total lighting control is required to enhance architectural features and buildings it also provides a light level similar to that of fluorescent. Hi-Slim™ can be specified for: Retail and shopping centres, hotels, leisure complexes, offices, meeting rooms, residential homes and heritage sites.

Controlling Options

Hi-Slim™ is instant start and is a constant output non- dimmable lamp.

Tubing

Hi-Slim™ is oven pumped to maximise the life expectancy to 30,000 burning hours and the slim 26mm tubing allows the lamps to be shaped to any architectural feature. It therefore provides total design flexibility. It produces a high output of 3000 lumens/metre based on a standard white and is also available in over 30 different colours.

Control Gear

The lamps are controlled from a reliable iron core copper wound high reactance auto connected transformer with an output of 450mA running at less than 1000V. This is a low voltage transformer as defined within the 16th Edition of the IEE Wiring Regulations and eliminates the need for special circuitry or a fireman's switch. A 20mfd capacitor is connected across the supply to correct the power factor to 0.85 lagging. These transformers can be mounted remotely, up to 100 metres from the controlling lamps. As there is no complicated electronic circuitry, life expectancy is in excess of 10 years.

Installation and Maintenance

Hi-Slim™ offers considerable technical and cost-saving benefits compared to conventional tubing systems.

© Oldham Lighting Limited - Jan 2003

OLDHAM LIGHTING LIMITED • CLAUDGEN HOUSE • EASTWICK ROAD • GREAT BOOKHAM • SURREY KT23 4DT

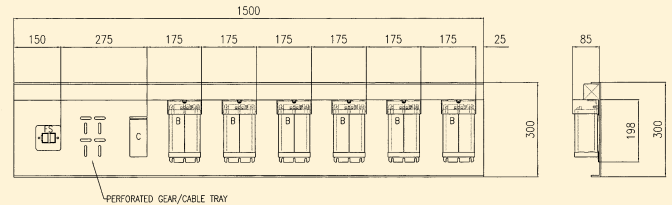
TEL: +44 (0)1372 459999 FAX: +44 (0)1372 459559 EMAIL: SALES@OLDHAMLIGHTING.CO.UK WWW.OLDHAMLIGHTING.CO.UK

Hi-Slim™ Specification

OLDHAM LIGHTING LTD

Product Specification

- 3000 lumens/metre
- Triphosphor
- Low voltage (below 1,000V) eliminates special wiring and fireman's switches
- Remote traditional copper wound control gear up to 100 metres
- Oven pumped long life tubing in excess of 30,000 burning hours
- 26mm Tubing with a choice of over 30 colours
- High constant output fluorescent
- Small diameter High Tension cables with no need for segregation
- Oven pumped lamps for cleaner burning and higher maintained lumen outputs



KEY	DESCRIPTION
FS	FUSED SPUR
C	CAPACITOR (APPROX. 2 Kgs)
B	850v/450mA SINGLE LAMP BALLAST

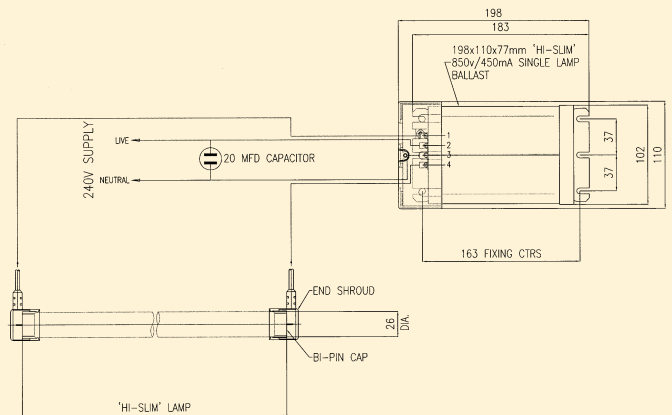
NOTE: ALL TRAYS TO BE EARTH BONDED

Hi-Slim™ Ballast Gear Tray Layout

Hi-Slim™ Ballast Electrical Specification

Each Hi-Slim™ Ballast unit controls up to 2.4 metres of Hi-Slim™ tubing

Input Voltage	220-240V
Secondary Voltage	850V
Operating Voltage	200-300V
Operating Current	450mA
Input Current (PF Corrected)	0.75A
Watt Consumption/Metre (PF Corrected)	72W



Schematic wiring diagram

Ballast Unit Features

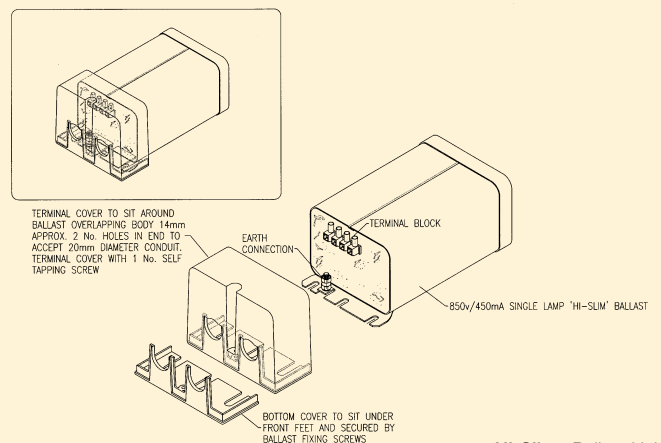
High-reactance auto connected transformer - open circuit voltage 850V

Polyester Resin encapsulation - protects components from damage and the environment

Mild Steel Case - provides robust earthed protection

Terminal Cover - is easily removable for installation and maintenance

20mm entry holes - within terminal cover allowing glanded connection to trunking and conduit systems



Hi-Slim™ Ballast Unit
Size - Height 76mm Length 185mm
Width 104mm - Weight 5.5Kg